

AMC-SCHOU - CYLINDER BORING AND MILLING PROGRAMME

TECHNICAL SPECIFICATIONS

| | | C/CM 1200V/ VF | CM 1800V/ VF | CM 2500V/ VF |
|--|----------------|----------------|--------------|--------------|
| Boring range | mm | 32-350 | 32-350 | 32-350 |
| Max. boring head travel | mm | 780/980 | 780/980 | 780/980 |
| Distance spindle centre to column | mm | 410 | 410 | 510 |
| Max. distance boring slide to table | mm | 1460 | 1460 | 1460 |
| Spindle speed | rpm | 50-1200 | 50-1200 | 20-1200 |
| Boring feed | mm/min | 20-1500 | 20-1500 | 20-1500 |
| Table surface | mm | 1525X450 | 2130X450 | 2540X600 |
| Table traverse lengthwise | mm | 1350 | 2025 | 2675 |
| Max. milling length (CM only) | mm | 1050 | 1725 | 2275 |
| Table speed (CM only) | mm/min | 0-1200 | 0-1200 | 0-1200 |
| Table movement crosswise | mm | 140 | 140 | 140 |
| Max workpiece on machine | kg | 1000 | 1200 | 2500 |
| Milling width (CM only) | mm | 300 | 300 | 400 |
| Optional milling width | mm | 400 | 400/500 | 300/500 |
| Max. distance between outer cylinder centres | mm | 1200 | 1800 | 2500 |
| Motors : | | | | |
| Spindle motor | kW | 4 | 4 5.5 | 4 5.5 |
| Motor for boring feed | kW | 0.75 | 0.75 1 | 0.75 1 |
| Motor for table feed | kW | 0.55 | 0.55 0.75 | 0.55 0.75 |
| Dimensions : | | | | |
| Work height required | mm | 3010/3210 | 3010/3210 | 3200/3400 |
| Height of column | mm | 2720/2920 | 2720/2920 | 2905/3105 |
| Total length of machine | mm | 2365 | 3330 | 3600 |
| Total width of machine | mm | 1720 | 1720 | 1900 |
| Working space required | mm | 3700X1720 | 5380X1720 | 6000X1900 |
| Net. weight approx. | kg | 3200/3300 | 4500/4600 | 5800/5900 |
| Shipping weight approx. (woodenbox) | kg | 3600/3700 | 5300/5400 | 6400/6500 |
| Shipping volume | m ³ | 9.30/9.91 | 15.84/16.89 | 22.72/24.12 |

As we are continuously improving our machines, descriptions, dimensions and illustrations are not binding in detail.



The Benefits of Precision

AMC-SCHOU



AMC-SCHOU

CYLINDER BORING AND MILLING PROGRAMME

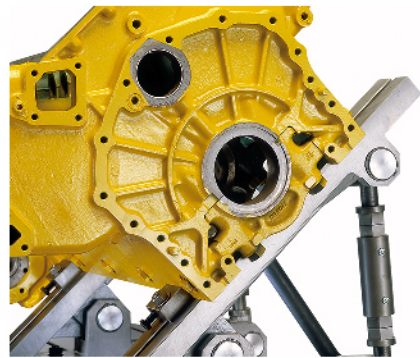
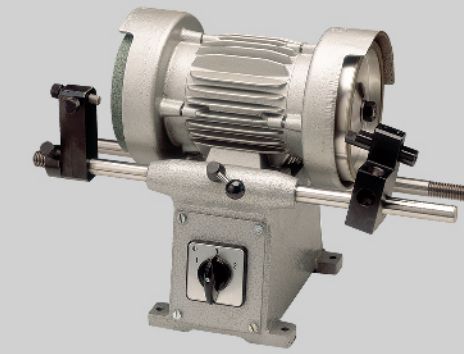
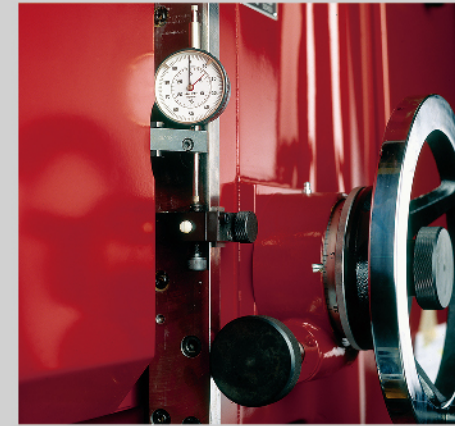


The Benefits of Precision

AMC-SCHOU CYLINDER BORING AND MILLING PROGRAMME

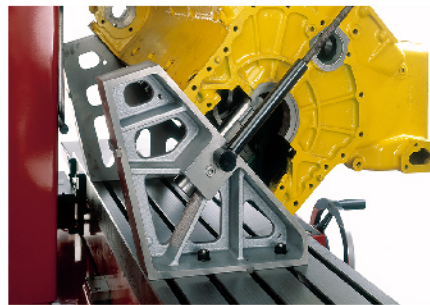
Backed by more than 60 years of experience, AMC-SCHOU can supply all your needs for fast and easymilling and cylinder block reboring up to 350 mm/ 13.8 inch in diameter.

All machines are equipped with a powerful 4 kW/5.5 hp motor for infinitely variable spindle speed and feature 1 motor for infinity variation of boring feeds. Fast retraction of the spindle from the cylinder, greatly increased productivity. CM machines feature both reboring and milling operations with infinitely variable control for table traverse, from 100-1200 mm / min/ 4-47 inch/min All machines are equipped with cycle control – the spindle will automatically retract when boring is finished and by activating a single switch on the control panel, the table will move and position the block ready for centering the spindle in the next cylinder (CM machines only).



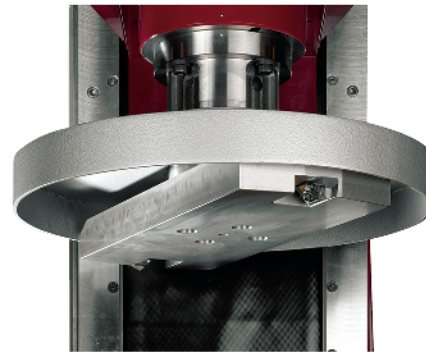
ADJUSTABLE ANGLE FIXTURE

All angles between 60° and 90° can be achieved using the adjustable angle fixture. Can be used for reboring and milling operations. Available for all machines.



UNIVERSAL BORING STAND

With V-blocks, 60° and 90° inclinations can be achieved with this stand. Can be used for reboring or milling operations. Available for all machines.



MILLING OPERATIONS

CM machines, featuring infinitely variable table traverse, are equipped with a 300 mm/11.8 inch milling head complete with 2 CBN cutters. (a 400 mm/15.75 inch is standard on CM 2500V). Lifting the guard gives access to the easily replaceable cutting tools. A 400 mm/15.75 inch head is available as an option for CM 1200V and CM 1800V. A 500 mm/19.70 inch head is available as an option for the CM 1800V and CM 2500V.

Note the optional storage and loading fixture for rapid spindle and milling head exchange which allows safe and convenient storage.

CONTROL PANEL

The machine is operated by means of an easy-to-use control panel which is mounted on a swivel arm, allowing the operator to stand in the best possible working position. The controls are located conveniently in sections for spindle rotation, boring slide movement and table movement. (See on the machine's picture)

DEPTH CONTROL

Accurate depth control when counter-boring is essential. Depth control with AMC-SCHOU machines is easy to use, fast and accurate.

TOOL GRINDER

The special AMC - SCHOU ToolGrinder Model TG 1 with its 150 mm/6inch grinding and diamond lapping wheels secures that correct angles are ground on carbide tipped boring tools. Can also be used to grind boring tools for Line Boring Machines.

QUICK ACTING CLAMPS

These clamps are indispensable when reboring in-line blocks.



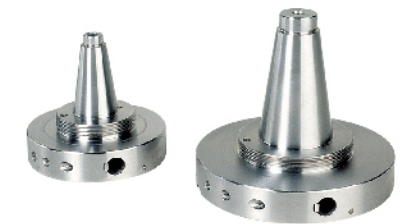
BORING SPINDLE NO. 1- 4

AMC-SCHOU supplies a full range of spindles. Above spindles covering the range from 48-260 mm/1.85-10.25 inch.
 No. 1: 48-72 mm/1.85-2.8 inch.
 No. 2: 62-100 mm/2.44-4 inch.
 No. 3: 92-200 mm/3.6-8 inch.
 No. 4: 145-260 mm/5.25-10.25 inch.



BORING SPINDLE NO. 5

The smallest spindle from AMC-SCHOU with a range from 32-50 mm/1.25-2 inch.



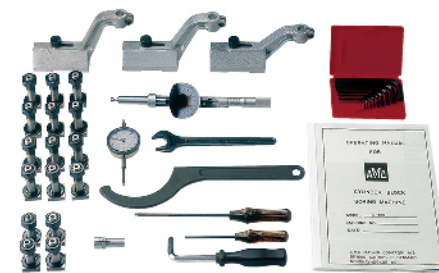
BORING HEADS

Extra boring heads are supplied with some spindles. The 140 mm/5.5 inch boring head can be used with spindle no. 3 and no. 4. The larger 190 mm/7.48 inch boring head can be used with spindle no. 4 and no. 7. Extra boring heads 260 mm/10.25 inch and 300 mm/11.8 inch are available for spindle no. 7.



INSERT BORING TOOLS

AMC-SCHOU supplies hardened tool holders with high-speed inserts.



TOOLING

With a direct reading micrometer clamped on the spindle by special holders, fast and accurate tool settings are achieved. Tooling for changing boring heads, T-bolts and spanners are also standard.

**CYLINDER BORING AND
MILLING PROGRAMME**