



P-30B "SPRAY CLEAN"

Automatic High Pressure Spray
Cleaning Cabinet

ASK A PETERSON USER.

A Favorite of Engine Rebuilders, Transmission Shops and Parts Recyclers Drastically Reduces Cleaning Time!

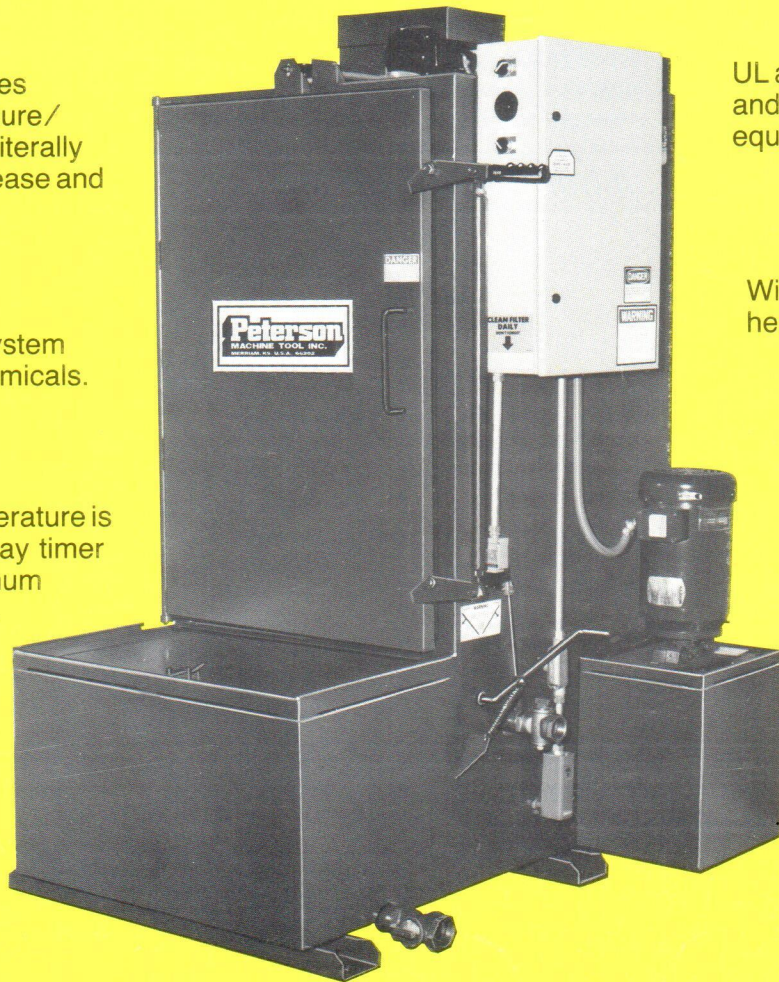
Precision fan nozzles produce high pressure/volume spray that literally shears off caked grease and grime.

Separate rinsing system does not dilute chemicals.

Cleaning fluid temperature is thermostat and 7-day timer controlled for optimum cleaning efficiency.

Electric or gas heated machines are available in 1Ø or 3Ø, 230V power.

Cabinet is insulated for energy efficiency and quiet operation.



UL approved electrical panel and 7-day timer are standard equipment.

Will clean large 6 cylinder heads including 671 GMC.

Vertical shaft, 5HP enclosed pump with no seals or outside plumbing to leak.

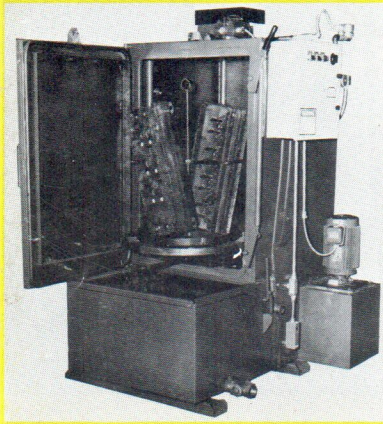
Unique drain system facilitates cleaning the fluid reservoir.

Positive door seal eliminates offensive fumes.

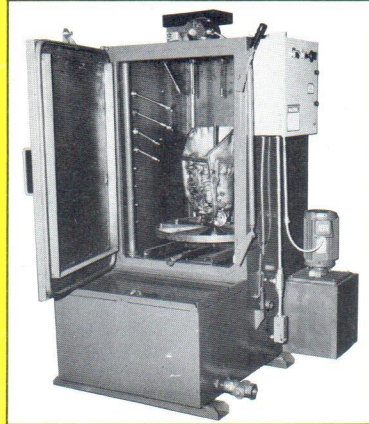
Diverter and safety switch prevent loss of chemical charge and control rinse water.

Other SPRAY CLEAN models/sizes available for your cleaning needs

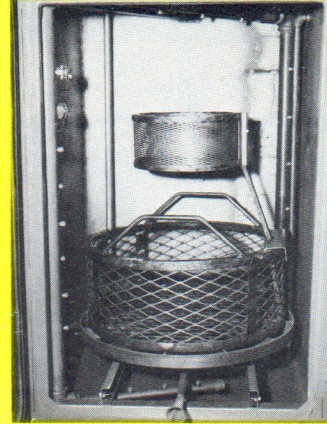
The P-30B Will Cut Your Cleaning Time to 10 Minutes or Less in Most Applications!



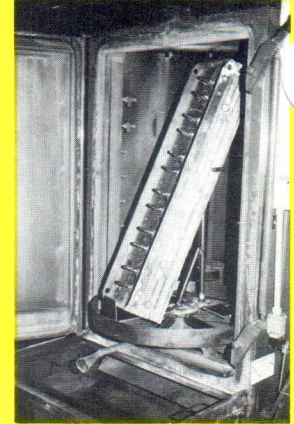
P-30B with Standard Head Rack.



Optional ATAK Nozzle Extenders for Transmission Cleaning.



Optional Parts Baskets.



Optional Head Rack with 671 GMC Head & standard parts soaker filter basket.

Door safety switch stops pump if door is opened.
Turntable cart rolls out to aid loading.

Large capacity filter also holds small parts for soaking during cleaning cycle.

Positive gearbox/motor turntable drive system.

Pump has no bearings or seals below solution level to cause problems.

Large 2.9 ft² filter basket can be used for parts soaking.

STANDARD EQUIPMENT:

- 7-Day Heat Timer
- UL Approved Electrical Panel and Components
- Forced Draft Gas Burner or Electric Solution Heating
- Standard Head Rack
- Rinse Diverter Safety Switch
- 1" Fiberglass Insulation

OPTIONAL EQUIPMENT:

- Single Phase Power
- ATAK Nozzle Extenders for Transmission Shops
- 671 Head Rack
- 24" Diameter x 10" Parts Basket
- 12" Diameter x 6" Transparts Basket
- 480 V, 3Ø Power
- Automatic sequential wash/ rinse cycle

P-30B SPECIFICATIONS

Inside Dimensions

Height	38"
Turntable Diameter	26"

Overall Dimensions

Overall Height	79"
Floor Space Required (Electric)	52" x 42" W
Floor Space Required (Gas)	52" x 52" W
Turntable Height Above Floor	29"
Load Capacity	600 #
Turntable Speed	3½ RPM
Spray Nozzles – Wash	15 (2 adjustable)
Rinse	8
Cabinet Insulation	1" Fiberglass
Shipping Weight	1285 #

Pump

Pump Motor (Standard)	5hp, 208-240V, 3Ø
(Optional)	5hp, 230V, 1Ø
Pump Output	75 GPM @ 60 PSI
No. of Seals in Pump	None
Lube Points on Pump	2

Heat Source

Heater Wattage (Electric)	9 KW
Burner BTU (Gas)	100,000 BTU
Cabinet Steam Vent	6" Dia.
Solution Capacity	85 Gal.
Solution Level	14"
Filter Area	525 Sq. In.
Cabinet Construction	12 Ga.

Electrical Requirements(230 V)

	3Ø	1Ø
Gas Heated	15A	25 A
Electrically Heated	38A	62 A

PETERSON MACHINE TOOL, INC. RESERVES THE RIGHT TO CHANGE ITS PRODUCTS AND THEIR SPECIFICATIONS AT ANY TIME WITHOUT NOTICE OR OBLIGATION.

All "Spraycleans" are equipped with guards and safety devices to comply with State and Trade Regulations for the protection of operators. All electrical wiring is designed to conform with National and State specification. Peterson Machine Tool, Inc. will not assume responsibility in cases of failure by the operator to exercise reasonable care when using the equipment.

SHIPPING: ALL UNITS F.O.B. COUNCIL GROVE, KANSAS

11/86

Peterson

MACHINE TOOL INC.

ASK A PETERSON USER.

5425 Antioch Drive
Shawnee Mission, Kansas 66202
Phone: 432-7500 Area Code [913] K.C., Ks.
Toll Free: 1-800-255-6308
USA Cable Address: Petmactinc TLX4-2532

PRINTED IN U.S.A.